

LILIAN

RESIDENCES

FLOOR PLANS





Basement

LILIAN

RESIDENCES

BY LONDON GATE

SETTING FLOOR PLAN



FLOOR PLANS:

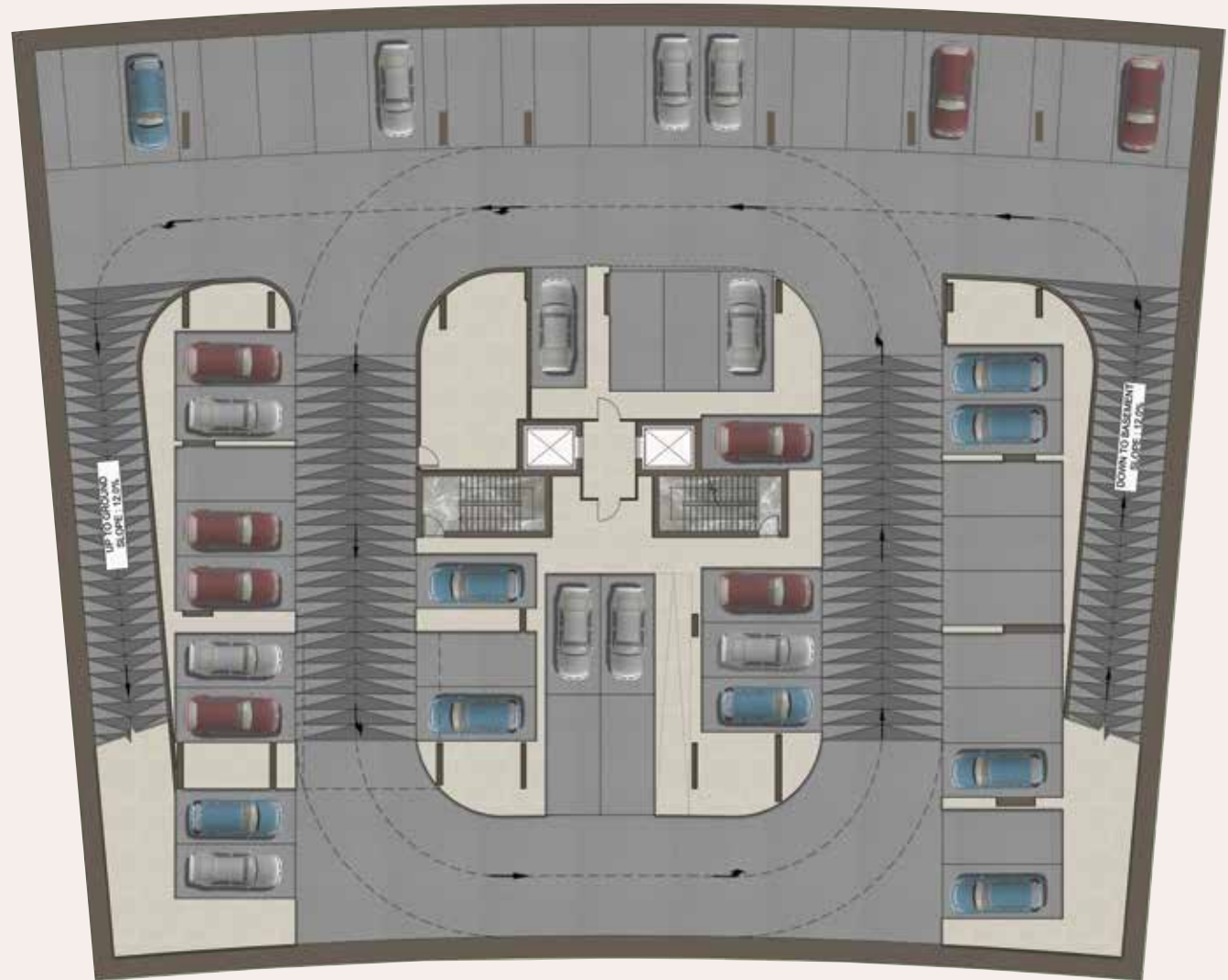
1. All dimensions are in imperial and metric and measured from finish to finish excluding construction tolerances.
2. All materials, dimensions, and drawings are approximate only.
3. Information is subject to change without notice, at the developer's discretion.
4. Actual area may vary from the stated area.
5. Drawings are not to scale.
6. All images used are for illustrative purposes only and do not represent the actual size, features, specifications, fittings, and furnishings.

LILIAN

RESIDENCES

BY LONDON GATE

BASEMENT



FLOOR PLANS:

1. All dimensions are in imperial and metric and measured from finish to finish excluding construction tolerances.
2. All materials, dimensions, and drawings are approximate only.
3. Information is subject to change without notice, at the developer's discretion.
4. Actual area may vary from the stated area.
5. Drawings are not to scale.
6. All images used are for illustrative purposes only and do not represent the actual size, features, specifications, fittings, and furnishings.



Typical Ground Floor Layout

LILIAN

RESIDENCES

BY LONDON GATE

SUITE AREA	36.87 SQ.M	396.87 SQ.FT
TERRACE AREA	8.66 SQ.M	93.22 SQ.FT
TOTAL AREA	45.53 SQ.M	490.08 SQ.FT

KEY PLAN



KEY SECTION



G - 01

STUDIO

AREA = 490.08 SQFT

GROUND FLOOR

1. LIVING AREA	6.04*3.70 SQM
2. PANTRY	3.30*1.80 SQM
3. BATH	2.60*1.75 SQM
4. BALCONY	3.80*2.09 SQM

FLOOR PLANS:
1. All dimensions are in imperial and metric and measured from finish to finish excluding construction tolerances.
2. All materials, dimensions, and drawings are approximate only.
3. Information is subject to change without notice, at the developer's discretion.
4. Actual area may vary from the stated area.
5. Drawings are not to scale.
6. All images used are for illustrative purposes only and do not represent the actual size, features, specifications, fittings, and furnishings.



LILIAN

RESIDENCES

BY LONDON GATE

SUITE AREA	36.87 SQ.M	396.87 SQ.FT
TERRACE AREA	8.66 SQ.M	93.22 SQ.FT
TOTAL AREA	45.53 SQ.M	490.08 SQ.FT

KEY PLAN



KEY SECTION



G - 02

TWO BEDROOM

AREA = 1284.89 SQFT

GROUND FLOOR

1. LIVING ROOM	6.15*3.90 SQM
2. BEDROOM	4.10*3.79 SQM
3. BEDROOM	3.60*3.42 SQM
4. KITCHEN	2.80*2.40 SQM
5. POWDER	2.69*1.80 SQM
6. BATH	2.20*1.67 SQM
7. BALCONY	8.72*2.98 SQM
8. BALCONY	9.40*1.27 SQM

FLOOR PLANS:
1. All dimensions are in imperial and metric and measured from finish to finish excluding construction tolerances.
2. All materials, dimensions, and drawings are approximate only.
3. Information is subject to change without notice, at the developer's discretion.
4. Actual area may vary from the stated area.
5. Drawings are not to scale.
6. All images used are for illustrative purposes only and do not represent the actual size, features, specifications, fittings, and furnishings.





Typical 1st to 6th Floor Layouts

LILIAN

RESIDENCES

BY LONDON GATE

SUITE AREA	80.8 SQ.M	869.72 SQ.FT
TERRACE AREA	18.99 SQ.M	204.41 SQ.FT
TOTAL AREA	99.79 SQ.M	1074.13 SQ.FT

KEY PLAN



KEY SECTION



1 - 01

TWO BEDROOM

AREA = 1074.13 SQFT

FIRST FLOOR

1. LIVING ROOM	5.83*3.72 SQM
2. BEDROOM	4.63*3.76 SQM
3. BEDROOM	4.21*3.63 SQM
4. KITCHEN	2.40*1.70 SQM
5. BATH	2.45*1.60 SQM
6. BATH	2.40*1.70 SQM
7. POWDER	1.70*1.30 SQM
8. BALCONY	7.62*1.60 SQM
9. BALCONY	3.63*1.70 SQM

FLOOR PLANS:
1. All dimensions are in imperial and metric and measured from finish to finish excluding construction tolerances.
2. All materials, dimensions, and drawings are approximate only.
3. Information is subject to change without notice, at the developer's discretion.
4. Actual area may vary from the stated area.
5. Drawings are not to scale.
6. All images used are for illustrative purposes only and do not represent the actual size, features, specifications, fittings, and furnishings.



LILIAN

RESIDENCES

BY LONDON GATE

SUITE AREA	80.8 SQ.M	869.72 SQ.FT
TERRACE AREA	18.99 SQ.M	208.41 SQ.FT
TOTAL AREA	99.79 SQ.M	1074.13 SQ.FT

KEY PLAN



KEY SECTION



1 - 02

TWO BEDROOM

AREA = 963.80 SQFT

FIRST FLOOR

1. LIVING ROOM	5.10*3.90 SQM
2. BEDROOM	4.50*3.96 SQM
3. BEDROOM	3.41*3.40 SQM
4. KITCHEN	2.50*2.40 SQM
5. BATH	2.61*1.60 SQM
6. POWDER	2.30*1.30 SQM
7. BALCONY	5.80*1.83 SQM
8. BALCONY	3.70*1.90 SQM



FLOOR PLANS:
1. All dimensions are in imperial and metric and measured from finish to finish excluding construction tolerances.
2. All materials, dimensions, and drawings are approximate only.
3. Information is subject to change without notice, at the developer's discretion.
4. Actual area may vary from the stated area.
5. Drawings are not to scale.
6. All images used are for illustrative purposes only and do not represent the actual size, features, specifications, fittings, and furnishings.

LILIAN

RESIDENCES

BY LONDON GATE

SUITE AREA	64.22 SQ.M	691.26 SQ.FT
TERRACE AREA	6.95 SQ.M	75.81 SQ.FT
TOTAL AREA	71.17 SQ.M	766.07 SQ.FT

KEY PLAN



KEY SECTION



1 - 03

ONE BEDROOM

AREA = 766.07 SQFT

FIRST FLOOR

1. LIVING ROOM	5.46*3.64 SQM
2. BEDROOM	4.82*3.60 SQM
3. KITCHEN	2.50*2.40 SQM
4. BATH	2.50*1.60 SQM
5. POWDER	1.90*1.30 SQM
6. LAU/STORE	3.60*2.30 SQM
7. BALCONY	3.89*1.83 SQM

FLOOR PLANS:
1. All dimensions are in imperial and metric and measured from finish to finish excluding construction tolerances.
2. All materials, dimensions, and drawings are approximate only.
3. Information is subject to change without notice, at the developer's discretion.
4. Actual area may vary from the stated area.
5. Drawings are not to scale.
6. All images used are for illustrative purposes only and do not represent the actual size, features, specifications, fittings, and furnishings.



LILIAN

RESIDENCES

BY LONDON GATE

SUITE AREA	93.77 SQ.M	1009.33 SQ.FT
TERRACE AREA	26.18 SQ.M	281.80 SQ.FT
TOTAL AREA	119.95 SQ.M	1291.13 SQ.FT

KEY PLAN



KEY SECTION



1 - 04

TWO BEDROOM

AREA = 1291.13 SQFT

FIRST FLOOR

1. LIVING ROOM	5.35*3.80 SQM
2. BEDROOM	4.05*3.60 SQM
3. BEDROOM	4.05*3.77 SQM
4. DRESS	2.57*1.82 SQM
5. KITCHEN	2.47*2.40 SQM
6. BATH	2.57*1.45 SQM
7. BATH	2.25*1.70 SQM
8. POWDER	1.70*1.47 SQM
9. LAU/STORE	2.60*1.39 SQM
10. LAU/STORE	1.10*0.88 SQM
11. BALCONY	106.7*2.50 SQM

FLOOR PLANS:

1. All dimensions are in imperial and metric and measured from finish to finish excluding construction tolerances.

2. All materials, dimensions, and drawings are approximate only.

3. Information is subject to change without notice, at the developer's discretion.

4. Actual area may vary from the stated area.

5. Drawings are not to scale.

6. All images used are for illustrative purposes only and do not represent the actual size, features, specifications, fittings, and furnishings.



LILIAN

RESIDENCES

BY LONDON GATE

SUITE AREA	65.14 SQ.M	701.16 SQ.FT
TERRACE AREA	19.37 SQ.M	208.50 SQ.FT
TOTAL AREA	84.51 SQ.M	909.66 SQ.FT

KEY PLAN



KEY SECTION



1 - 05

ONE BEDROOM

AREA = 909.66 SQFT

FIRST FLOOR

1. LIVING ROOM	4.90*3.70 SQM
2. BEDROOM	4.70*3.55 SQM
3. KITCHEN	2.50*2.40 SQM
4. POWDER	1.94*1.65 SQM
5. BATH	2.40*1.65 SQM
6. LAU/STORE	2.40*1.84 SQM
7. BALCONY	7.50*2.50 SQM

FLOOR PLANS:

1. All dimensions are in imperial and metric and measured from finish to finish excluding construction tolerances.

2. All materials, dimensions, and drawings are approximate only.

3. Information is subject to change without notice, at the developer's discretion.

4. Actual area may vary from the stated area.

5. Drawings are not to scale.

6. All images used are for illustrative purposes only and do not represent the actual size, features, specifications, fittings, and furnishings.



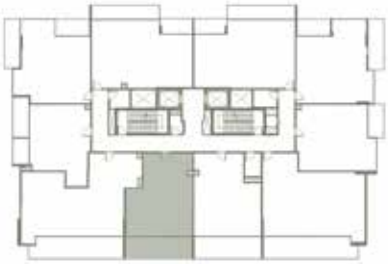
LILIAN

RESIDENCES

BY LONDON GATE

SUITE AREA	63.95 SQ.M	688.35 SQ.FT
TERRACE AREA	19.37 SQ.M	208.50 SQ.FT
TOTAL AREA	83.32 SQ.M	896.85 SQ.FT

KEY PLAN



KEY SECTION



1 - 06

ONE BEDROOM

AREA = 896.85 SQFT

FIRST FLOOR

1. LIVING ROOM	4.90*3.70 SQM
2. BEDROOM	4.70*3.55 SQM
3. KITCHEN	2.50*2.40 SQM
4. POWDER	1.94*1.65 SQM
5. BATH	2.40*1.65 SQM
6. LAU/STORE	2.40*1.84 SQM
7. BALCONY	7.50*2.50 SQM

FLOOR PLANS:
1. All dimensions are in imperial and metric and measured from finish to finish excluding construction tolerances.
2. All materials, dimensions, and drawings are approximate only.
3. Information is subject to change without notice, at the developer's discretion.
4. Actual area may vary from the stated area.
5. Drawings are not to scale.
6. All images used are for illustrative purposes only and do not represent the actual size, features, specifications, fittings, and furnishings.



LILIAN

RESIDENCES

BY LONDON GATE

SUITE AREA	97.97 SQ.M	1054.54 SQ.FT
TERRACE AREA	26.1 SQ.M	280.94 SQ.FT
TOTAL AREA	124.07 SQ.M	1335.48 SQ.FT

KEY PLAN



KEY SECTION



1 - 07

TWO BEDROOM

AREA = 1335.48 SQFT

FIRST FLOOR

1. LIVING ROOM	6.60*3.80 SQM
2. BEDROOM	4.05*3.40 SQM
3. BEDROOM	4.33*3.82 SQM
4. DRESS	2.42*1.82 SQM
5. KITCHEN	4.20*2.64 SQM
6. BATH	2.42*1.70 SQM
7. BATH	2.30*1.70 SQM
8. POWDER	1.94*1.60 SQM
9. LAU/STORE	1.40*1.10 SQM
10. BALCONY	106.7*2.50 SQM



FLOOR PLANS:

1. All dimensions are in imperial and metric and measured from finish to finish excluding construction tolerances.
2. All materials, dimensions, and drawings are approximate only.
3. Information is subject to change without notice, at the developer's discretion.
4. Actual area may vary from the stated area.
5. Drawings are not to scale.
6. All images used are for illustrative purposes only and do not represent the actual size, features, specifications, fittings, and furnishings.

LILIAN

RESIDENCES

BY LONDON GATE

SUITE AREA	97.97 SQ.M	1054.54 SQ.FT
TERRACE AREA	26.1 SQ.M	280.94 SQ.FT
TOTAL AREA	124.07 SQ.M	1335.48 SQ.FT

KEY PLAN



KEY SECTION



1 - 08

ONE BEDROOM

AREA = 739.91 SQFT

FIRST FLOOR

1. LIVING ROOM	4.55*3.64 SQM
2. BEDROOM	3.60*3.42 SQM
3. DRESS	2.40*2.35 SQM
4. KITCHEN	2.40*2.25 SQM
5. BATH	2.30*1.65 SQM
6. POWDER	1.90*1.43 SQM
7. BALCONY	4.47*1.85 SQM
8. BALCONY	2.86*1.85 SQM

FLOOR PLANS:
1. All dimensions are in imperial and metric and measured from finish to finish excluding construction tolerances.
2. All materials, dimensions, and drawings are approximate only.
3. Information is subject to change without notice, at the developer's discretion.
4. Actual area may vary from the stated area.
5. Drawings are not to scale.
6. All images used are for illustrative purposes only and do not represent the actual size, features, specifications, fittings, and furnishings.



LILIAN

RESIDENCES

BY LONDON GATE

SUITE AREA	68.02 SQ.M	732.16 SQ.FT
TERRACE AREA	17.76 SQ.M	191.17 SQ.FT
TOTAL AREA	85.78 SQ.M	923.33 SQ.FT

KEY PLAN



KEY SECTION



1 - 09

TWO BEDROOM

AREA = 923.33 SQFT

FIRST FLOOR

1. LIVING ROOM	5.00*3.70 SQM
2. BEDROOM	4.30*3.80 SQM
3. BEDROOM	3.40*2.87 SQM
4. KITCHEN	2.50*2.50 SQM
5. BATH	2.45*1.60 SQM
6. POWDER	1.75*1.50 SQM
7. BALCONY	5.60*1.80 SQM
8. BALCONY	3.80*1.90 SQM



FLOOR PLANS:
1. All dimensions are in imperial and metric and measured from finish to finish excluding construction tolerances.
2. All materials, dimensions, and drawings are approximate only.
3. Information is subject to change without notice, at the developer's discretion.
4. Actual area may vary from the stated area.
5. Drawings are not to scale.
6. All images used are for illustrative purposes only and do not represent the actual size, features, specifications, fittings, and furnishings.

LILIAN

RESIDENCES

BY LONDON GATE

SUITE AREA	68.02 SQ.M	732.16 SQ.FT
TERRACE AREA	17.76 SQ.M	191.17 SQ.FT
TOTAL AREA	85.78 SQ.M	923.33 SQ.FT

KEY PLAN



KEY SECTION



1 - 010

TWO BEDROOM

AREA = 1074.02 SQFT

FIRST FLOOR

1. LIVING ROOM	5.83*3.86 SQM
2. BEDROOM	4.63*3.60 SQM
3. BEDROOM	4.21*3.63 SQM
4. KITCHEN	2.50*1.83 SQM
5. BATH	2.40*1.70 SQM
6. BATH	2.45*1.60 SQM
7. POWDER	1.70*1.30 SQM
8. BALCONY	7.57*1.60 SQM
9. BALCONY	3.62*1.70 SQM

FLOOR PLANS:

1. All dimensions are in imperial and metric and measured from finish to finish excluding construction tolerances.

2. All materials, dimensions, and drawings are approximate only.

3. Information is subject to change without notice, at the developer's discretion.

4. Actual area may vary from the stated area.

5. Drawings are not to scale.

6. All images used are for illustrative purposes only and do not represent the actual size, features, specifications, fittings, and furnishings.





Roof Top

LILIAN

RESIDENCES

BY LONDON GATE

ROOF PLAN



FLOOR PLANS:

1. All dimensions are in imperial and metric and measured from finish to finish excluding construction tolerances.
2. All materials, dimensions, and drawings are approximate only.
3. Information is subject to change without notice, at the developer's discretion.
4. Actual area may vary from the stated area.
5. Drawings are not to scale.
6. All images used are for illustrative purposes only and do not represent the actual size, features, specifications, fittings, and furnishings.

LILIAN

RESIDENCES

BY LONDON GATE

TOP ROOF PLAN



FLOOR PLANS:

1. All dimensions are in imperial and metric and measured from finish to finish excluding construction tolerances.
2. All materials, dimensions, and drawings are approximate only.
3. Information is subject to change without notice, at the developer's discretion.
4. Actual area may vary from the stated area.
5. Drawings are not to scale.
6. All images used are for illustrative purposes only and do not represent the actual size, features, specifications, fittings, and furnishings.

LILIAN
RESIDENCES

BY LONDON GATE